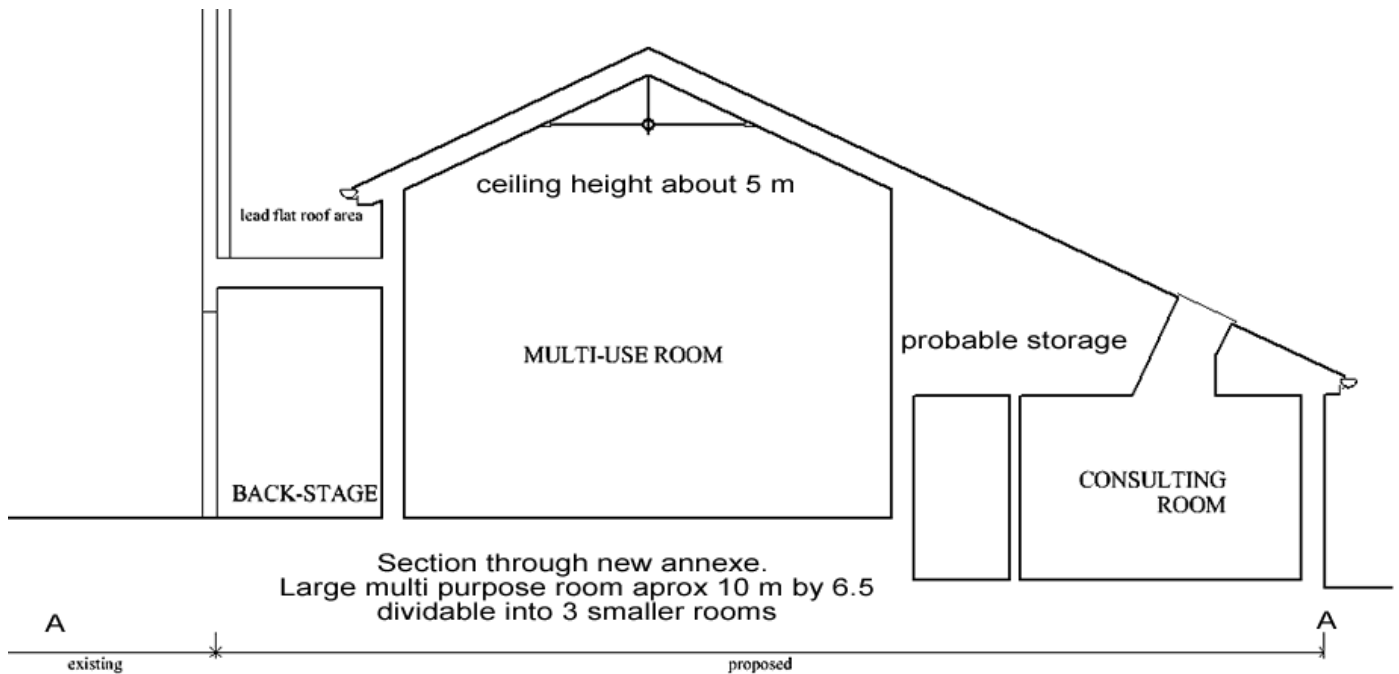


Neuadd Dyfi Annexe Proposed annexe  
May 2008

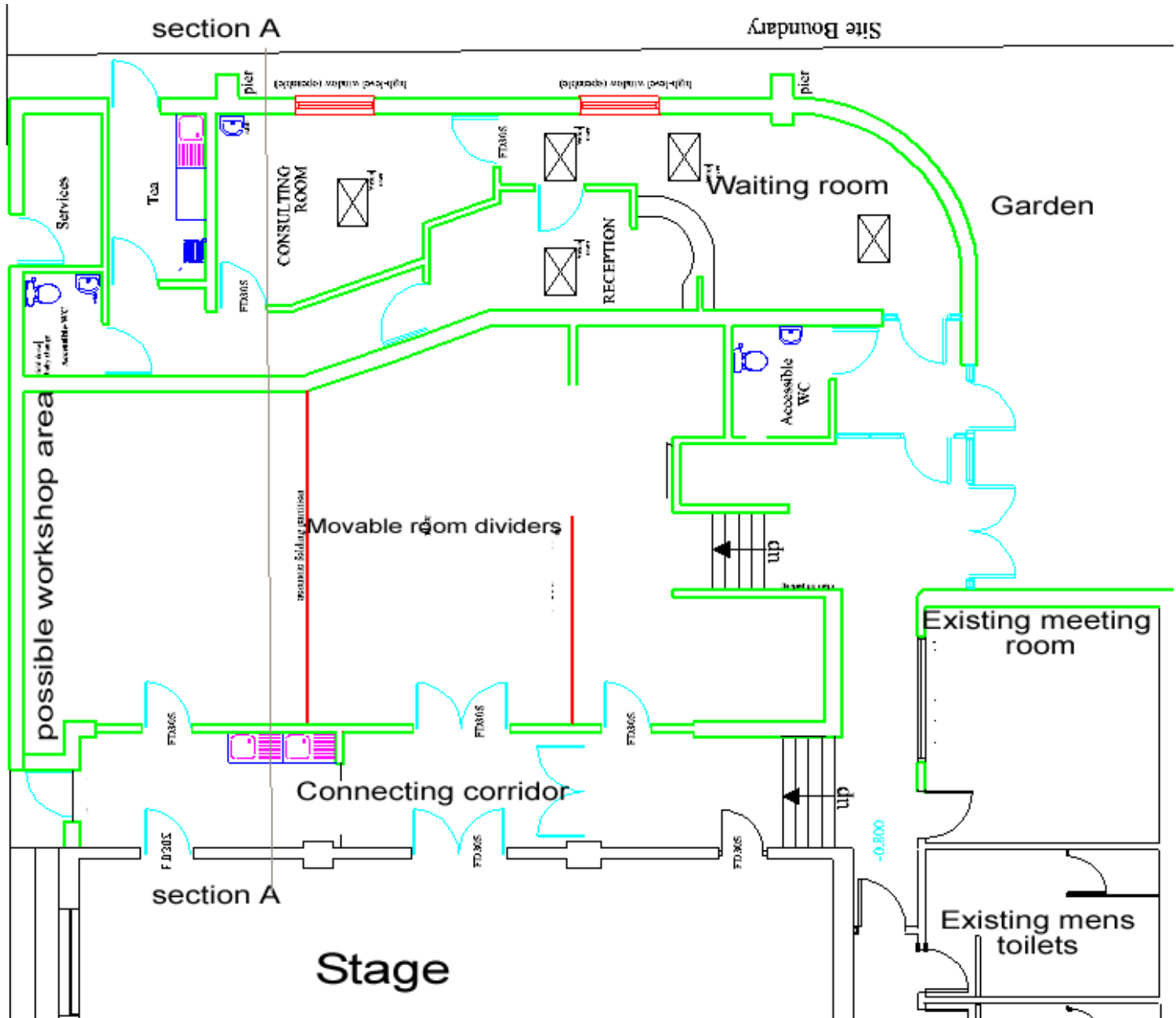


The proposed elements are as follows in suggested order of priority. Should funding not be available for whole scheme the lower number will take priority

<u>Element</u>	<u>Priority</u>	<u>Description</u>	
<b><u>Community annexe</u></b>	<b><u>1</u></b>	Large open plan room aprox 8 by 12 metres to include provision for dividers to make 3 rooms sprung maple floor small workshop/store/service area. Full width 2.4m corridor with connecting doors separating new build from old hall.	
	<b><u>9</u></b>	two room Dividers allowing 3 smaller rooms	
<b><u>Doctors surgery</u></b>	<b><u>2</u></b>	as previously designed	
<b><u>Existing Stage area refurbishment</u></b>	<b><u>4</u></b>	Purpose made handrail at front of stage that lifts up and drops down	
	<b><u>8</u></b>	new stage floor	
	<b><u>6</u></b>	New stage lighting grid + lighting, Aprox 900mm higher than existing	
	<b><u>7</u></b>	Additional stage refurbishment	
<b><u>Heating</u></b>	<b><u>3</u></b>	Ground source heat pump installation	
	<b><u>5</u></b>	New air system for existing hall	
	<b><u>10</u></b>	Rain water harvesting	
	<b><u>11</u></b>	Photovoltaic's	

Add your comments on the elements and their priority and any other elements you think are needed here.....

Neuadd Dyfi Annexe Proposed annexe  
May 2008



Following last years feasibility study we are now preparing a reduced scheme as the original design, though meeting all needs, was unlikely to be fully funded. The intention is to build a modest annexe to the main hall which will be very flexible in use. The doctors surgery, supported by the local health board and doctors practice is also a high priority and remains as planned last year though moved east to give a garden area.

We need your ideas and comments

Please write

Name.....

and Organisation .....

Date..... And

Comments on Layout here please ( continue on the back if necessary)

Please return to Des George 01654767251, 07977943249  
More information on [www.neuaddyfi.co.uk](http://www.neuaddyfi.co.uk)